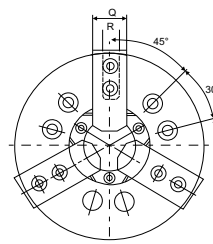
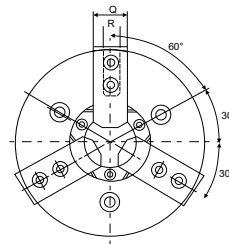
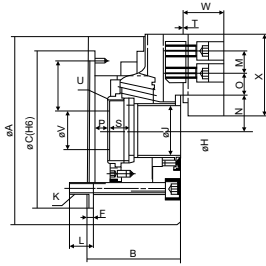


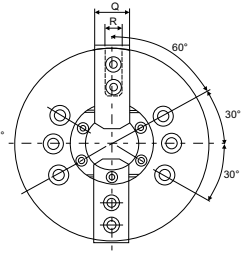
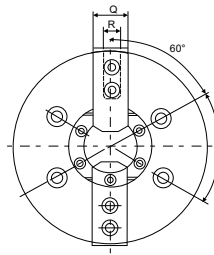
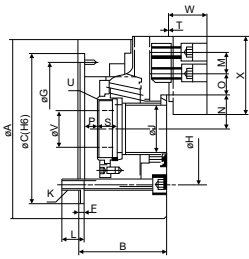
**ГИДРАВЛИЧЕСКИЕ ТОКАРНЫЕ  
ПАТРОНЫ И КОМПЛЕКТУЮЩИЕ К НИМ**



Dimensions	A	B	C	F	G	H	J	K	L	M	N <sub>max</sub>	N <sub>min</sub>
N-204	110	59	85	4	-	70.6	26	3-M10x1.5P	15	14	23	20.3
N-205	135	60	110	4	96	82.6	33	3-M10x1.5P	15	14	26.5	23.8
N-206	168	81	140	5	116	104.8	45	6-M10x1.5P	16	20	32.0	29.25
N-208	210	91	170	5	150	133.4	52	6-M12x1.75P	18	25	38.0	35
N-210	254	100	220	5	190	171.4	75	6-M16x2P	19	30	51.0	46.6
N-212	304	110	220	6	190	171.4	91	6-M16x2P	25	30	61.3	56
N-215	381	133	300	6	260	235.0	117.5	6-M20x2.5P	28	43	82.7	77.4

Dimensions	O <sub>max</sub>	O <sub>min</sub>	P <sub>max</sub>	P <sub>min</sub>	Q	R	S	T	U	V	W	X
N-204	11	6	3.5	-3.5	23	10	17.5	2	M32x1.5P	12	24	52
N-205	19	6	1	-9	25	10	19.0	2	M40x1.5P	12	31.5	62
N-206	24	7	11	-1	31	12	19.0	2	M55x2P	20	37	73
N-208	30	10	14.5	-1.5	35	14	20.0	2	M60x2P	30	39	95
N-210	34	12	8.5	-10.5	40	16	25.0	2	M85x2P	40	43	110
N-212	46	12	8	-15	50	21	28.0	2	M100x2P	50	51	129
N-215	46	12	8	-15	62	22	42.5	5	M130x2P	60	66	165

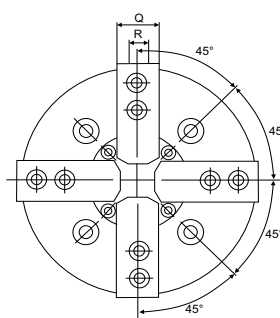
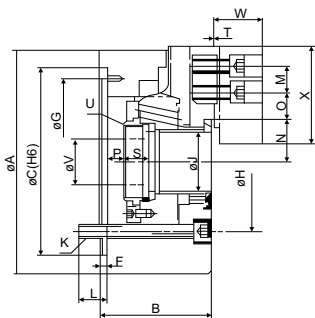
Dimensions	Thru-Hole	Plunger Stroke	Jaw Stroke	Max. Speed	Max. Pull Force	Max. Gripping Force	Matching Cylinder	Gripping Range	Max. Pressure	Max. Pressure	Weight (kg)
N-204	26	10	5.4	8000	1400(13.7)	2900(28)	SH428	110	7	29(2.3)	4.0
N-205	33	10	5.4	7000	1730(17)	3550(35)	SH1036	135	10	29(2.8)	6.0
N-206	45	12	5.5	6000	2140(21)	5700(56)	SH1246	168	13	28(2.7)	12.5
N-208	52	16	7.4	4800	3350(33)	8350(82)	SH1552	210	16	26(2.5)	22.0
N-210	75	19	8.8	4200	4280(42)	11000(108)	SH1875	254	25	27(2.6)	33.6
N-212	91	23	10.6	3300	5500(55)	14300(140)	SH2091	304	23	27(2.6)	55.3
N-215	117.5	23	10.6	2500	7200(71)	18200(178)	SH2511	381	42	25(2.4)	106.8



Dimensions	A	B	C	F	G	H	J	K	L	M	N <sub>max</sub>	N <sub>min</sub>
NT-204	110	59	85	4	-	70.6	26	4-M10x1.5P	15	14	23	20.3
NT-205	135	60	110	4	96	82.6	33	3-M10x1.5P	15	14	26.5	23.8
NT-206	168	81	140	5	116	104.8	45	6-M10x1.5P	16	20	32.0	29.25
NT-208	210	91	170	5	150	133.4	52	6-M12x1.75P	18	25	38.7	35
NT-210	254	100	220	5	190	171.4	75	6-M16x2P	19	30	51.0	46.6
NT-212	304	110	220	6	190	171.4	91	6-M16x2P	25	30	61.3	56
NT-215	381	133	300	6	260	235.0	117.5	6-M20x2.5P	28	43	82.7	77.4

Dimensions	O <sub>max</sub>	O <sub>min</sub>	P <sub>max</sub>	P <sub>min</sub>	Q	R	S	T	U	V	W	X
NT-204	11	6	3.5	-3.5	23	10	17.5	2	M32x1.5P	12	24	52
NT-205	19	7	1	-9	25	10	19.0	2	M40x1.5P	12	31.5	62
NT-206	24	10	11	-1	31	12	19.0	2	M55x2P	20	37	73
NT-208	30	12	14.5	-1.6	36	14	20.0	2	M60x2P	30	39	95
NT-210	34	12	8.5	-10.5	40	16	25.0	2	M85x2P	40	43	110
NT-212	46	13	8	-15	50	21	28.0	2	M100x2P	50	51	129
NT-215	46		8	-15	62	22	42.5	5	M130x2P	60	66	165

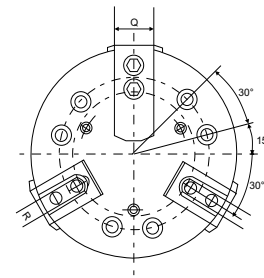
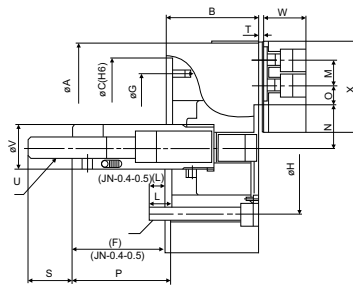
Dimensions	Thru-Hole	Plunger Stroke	Jaw Stroke	Max. Speed	Max. Pull Force	Max. Gripping Force	Matching Cylinder	Gripping Range		Max. Pressure	Weight (kg)
								Max	Min		
NT-204	26	10	5.4	8000	1400	2900	SH428	110	7	18.5(2.3)	4.0
NT-205	33	10	5.4	7000	1730	2430	SH1036	135	12	18.5(1.8)	6.5
NT-206	45	12	5.5	6000	2140	3750	SH1246	168	14	18.5(1.8)	13.0
NT-208	52	16	7.4	4800	3350	5700	SH1552	210	16	17.0(1.7)	22.5
NT-210	75	19	8.8	4200	4280	7420	SH1875	254	31	18.0(1.8)	35.5
NT-212	91	23	10.6	3300	5500	9680	SH2091	304	34	18.0(1.8)	52.0
NT-215	117.5	23	10.6	2500	7200	12100	SH2511	381	37	17.0(1.7)	103.5



Dimensions	A	B	C	F	G	H	J	K	L	M	N <sub>max</sub>	N <sub>min</sub>
NIT-205	135	60	110	4	96	82.6	33	4-M10x1.5P	15	14	28.5	23.80
NIT-206	168	81	140	5	116	104.8	45	4-M10x1.5P	16	20	32.0	29.25
NIT-208	210	91	170	5	150	133.4	52	4-M10x1.5P	18	25	38.7	35.0
NIT-210	354	100	220	5	190	171.4	75	4-M10x1.5P	19	30	51.0	46.6
NIT-212	304	110	220	6	1990	171.4	91	4-M10x1.5P	25	30	61.3	56.0
NIT-215	381	133	300	6	260	235.0	117.5	4-M10x1.5P	28	43	82.7	77.4

Dimensions	O <sub>max</sub>	O <sub>min</sub>	P <sub>max</sub>	P <sub>min</sub>	Q	R	S	T	U	V	W	X
NIT-205	19	6	1	-9	25	10	19.0	2	4-M10x1.5P	12	31.5	62
NIT-206	24	7	11	-1	31	12	19.0	2	4-M10x1.5P	20	37	73
NIT-208	30	10	14.5	-1.6	35	14	20.0	2	4-M10x1.5P	30	39	95
NIT-210	34	12	8.5	-10.5	40	16	25.0	2	4-M10x1.5P	40	43	110
NIT-212	46	12	8	-15	50	21	28.0	2	4-M10x1.5P	50	51	129
NIT-215	46	13	8	-15	62	22	42.5	5	4-M10x1.5P	60	66	165

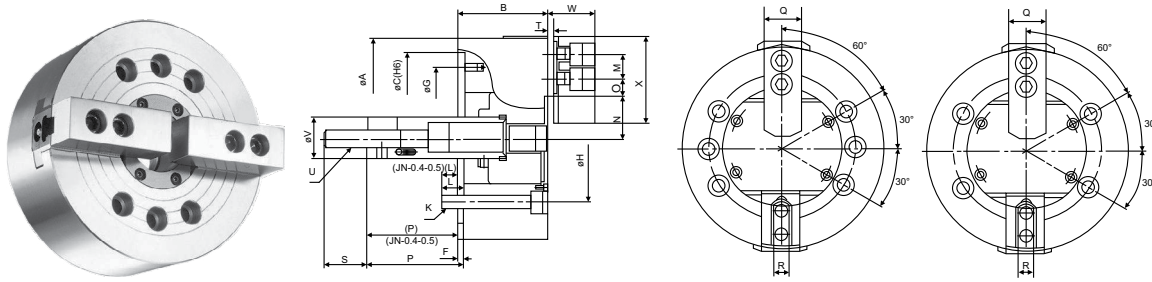
Dimensions	Thru-Hole	Plunger Stroke	Jaw Stroke	Max. Speed	Max. Pull Force	Max. Gripping Force	Matching Cylinder	Gripping Cylinder	Gripping Range	Max. Pressure	Weight(kg)
NIT-205	33.0	10	5.4	7000	1730	3550	SH1036	135	10	29(2.8)	6.0
NIT-206	45.0	12	5.5	4500	1630	41800	SH1246	168	22	21(2.1)	14.2
NIT-208	52.0	16	7.4	3600	2440	6000	SH1552	210	25	19(1.9)	24.5
NIT-210	75.0	19	8.8	3200	3160	8000	SH1875	254	26	20(2.0)	38.0
NIT-212	91.0	23	10.6	2500	4080	10400	SH2091	304	35	20(2.0)	60.5
NIT-215	117.5	23	10.6	1800	5400	13600	SH2511	381	63	19(1.9)	111.5



Dimensions	A	B	C	F	G	H	K	L	M	N <sub>max</sub>	N <sub>min</sub>
V-204	110	52	60	6	-	80	3-M8	12	14	23.3	20.10
V-205	135	55	80	7	-	100	3-M8	14	14	30.4	27.20
V-206	165	74	140	5	116	104.8	6-M10	14	20	37.8	33.55
V-208	210	85	170	5	150	133.4	6-M12	18	25	46.3	41.90
V-210	254	89	220	5	190	171.4	6-M16	20	30	51.4	47.00
V-212	304	106	220	6	190	171.4	6-M16	20	30	60.7	55.45
V-215	381	114	300	6	260	235	6-M20	30	43	77.5	69.50
V-218	450	114	300	6	260	235	6-M20	30	43	108.0	100.00
V-221	530	125	380	6	330.2	330.2	6-M20	31	60	86.0	78.00
V-224	610	125	380	6	330.2	330.2	6-M20	31	60	125.0	117.00

Dimensions	O <sub>max</sub>	O <sub>min</sub>	P <sub>max</sub>	P <sub>min</sub>	Q	R	S	U	V	W	X
V-204	11.25	8.25	18	3.0	23	10.0	3	M10x1.5P	26	27	53
V-205	11.25	6.75	9	-6.0	25	10.0	3	M12x1.75P	28	31	62
V-206	18	7.5	101.5	81.5	31	12.0	4	M16x2.0P	34	39	73
V-208	22.5	9	127	106.0	35	14.0	5	M20x2.5P	38	42	95
V-210	37.5	10.5	158	133.0	40	16.0	5	M20x2.5P	45	46	110
V-212	47	11	163	133.0	50	18.0	5	M20x2.5P	50	54	130
V-215	48.75	23.25	104	69.0	62	25.5	2	M30x3.5P	60	62	165
V-218	48.75	23.25	92	57.0	62	255.5	2	M30x3.5P	60	62	165
V-221	93.5	27.5	97	62.0	65	25.0	3	M30x3.5P	60	70	180
V-224	93.5	27.5	97	62.0	65	25.0	3	M30x3.5P	60	70	180

Dimensions	Plinger Stroke	Jaw Stroke	Max. Speed	Max. Pull Force	Max. Gripping Force	Matching Cylinder	Gripping Range		Max. Pressure	Weight (kg)
							Max	Min		
V-204	15	6.4	5800	775	2325	J-Y0815	110	8	22(2.2)	4.1
V-205	15	6.4	5500	800	2450	J-Y0815	135	16	22(2.2)	6.2
V-206	20	8.5	5000	1730	5200	J-Y1020	165	19	27(2.6)	12.0
V-208	21	8.8	4600	2440	7440	J-Y1225	210	23	25(2.5)	25.0
V-210	25	8.8	4000	2850	10810	J-Y1225	254	24	29(2.8)	37.0
V-212	30	10.5	3200	4080	15500	J-Y1530	304	26	29(2.8)	57.3
V-215	35	16	2800	8260	25290	J-Y2035	381	72	32.5(3.2)	96.5
V-218	35	16	2700	8260	25290	J-Y2035	450	135	32.5(3.2)	124.5
V-221	35	16	1900	8260	25290	J-Y2035	530	70	32.5(3.2)	180
V-224	35	16	1750	8260	25290	J-Y2035	610	152	32.5(3.2)	223

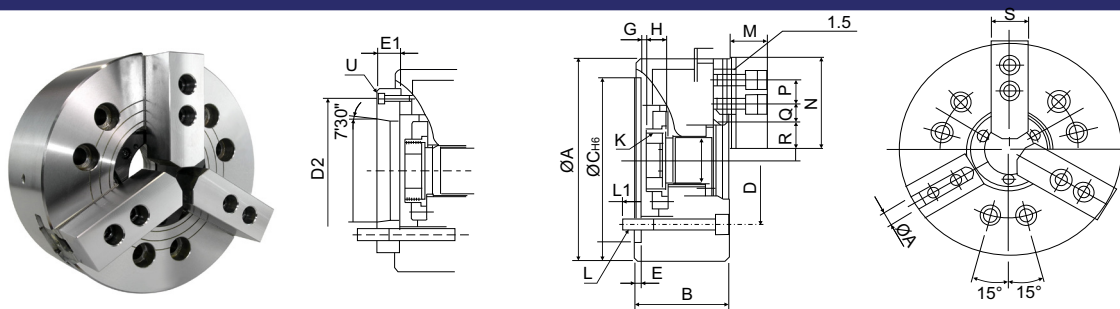


Dimensions	A	B	C	F	G	H	K	L	M	N <sub>max</sub>	N <sub>min</sub>
VT-205	135	55	80	7	-	100	4-M8	14	14	30.4	27.20
VT-206	165	74	140	5	116	104.8	6-M10	14	20	37.8	33.55
VT-208	210	85	170	5	150	133.4	6-M12	18	25	46.8	41.90
VT-210	254	89	220	5	190	171.4	6-M16	20	30	51.4	47.00
VT-212	304	106	220	6	190	171.4	6-M16	20	30	60.7	55.45

Dimensions	O <sub>max</sub>	O <sub>min</sub>	P <sub>max</sub>	P <sub>min</sub>	Q	R	S	T	U	V	W	X
VT-205	11.25	6.75	9	-6.0	25	10.0	35	3	M12x1.75P	28	31	62
VT-206	18	7.5	101.5	81.5	31	12.0	36	4	M16x2.0P	34	39	73
VT-208	22.5	9	127	106	35	14.0	36	5	M20x2.5P	38	42	95
VT-210	37.5	10.5	158	133	40	16.0	36	5	M20x2.5P	45	46	110
VT-212	47	11	163	133	50	18.0	36	5	M20x2.5P	50	54	130

Dimensions	Plunger Stroke	Jaw Stroke	Max. Speed	Max. Pull Force	Max. Gripping Force	Matching Cylinder	Gripping Range		Max Pressure	Weight (kg)
							Max	Min		
VT-205	15	6.4	5500	800(7.8)	2450(24)	J-Y0815	135	16	22(2.2)	6.2
VT-206	20	8.5	5000	1220	3460	J-Y1020	165	22	19(1.9)	12.5
VT-208	21	8.8	4000	1630	4990	J-Y1225	210	24	16(1.6)	24.0
VT-210	25	8.8	3500	1930	7140	J-Y1225	254	27	19(1.9)	35.5
VT-212	30	10.5	3000	2750	10300	J-Y1530	304	33	18.5(1.8)	60.5

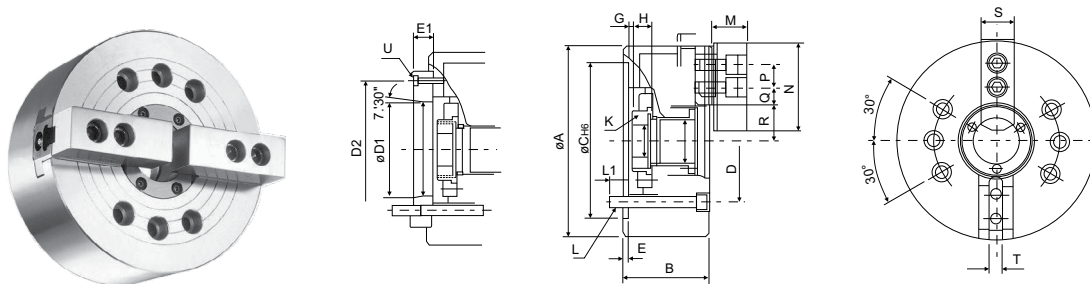
## 3-кулачковый патрон гидравлический со сквозным отверстием (с адаптером)



Dimensions	Plunger stroke (mm)	Max Pull Force (kgf)	Max Clamp (kgf)	Max oil pressure (kgf)	Max Speed (r.p.m)	Weight (kg)	Inert (kg*m <sup>2</sup> )	Matching Cylinder	Clamping Range (mm)
N-206A5	13	2400	2650	27	3600	14.8	0.063	1246	Ø10-Ø168
N-208A6	16	3500	4150	26	3000	24.1	0.175	1552	Ø10-Ø210
N-210A8	22	4870	5700	27	2400	42.5	0.347	1075	Ø10-Ø254

Dimensions	A	B	C(H6)	D	D1	D2	E	E1	F	G <sub>max</sub>	G <sub>min</sub>	H	J
N-206A5	168	90	140	104.78	82.563	116	5	18	45	6.5	-8.5	19	45
N-208A6	210	100	170	133.35	106.375	150	5	23	52	7	-13	20	52
N-210A8	254	110	220	171.45	139.719	190	5	18	75	8	-17	25	75

Dimensions	K <sub>max</sub>	L	L1	M	N	P	Q <sub>max</sub>	Q <sub>min</sub>	R <sub>max</sub>	R <sub>min</sub>	S	T	U
N-206A5	M55*2	6-M10	15	37	73	20	25.75	13.75	39	27	31	12	3-M6
N-208A6	M60*2	6-M12	18	38	95	25	28.25	16.25	49.25	33.25	35	14	3-M6
N-210A8	M85*2	6-M16	22	43	110	30	35.25	17.25	64.25	45.25	40	16	3-M8

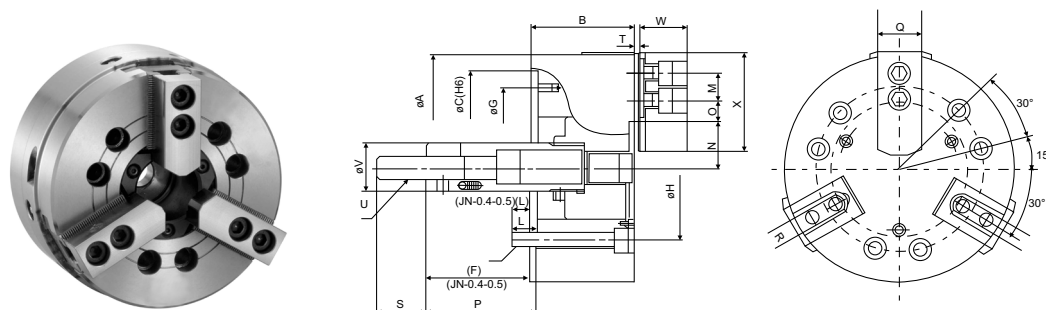


Dimensions	Plunger stroke (mm)	Max Pull Force (kgf)	Max Clamp (kgf)	Max oil pressure (kgf)	Max Speed (r.p.m)	Weight (kg)	Inert (kg*m <sup>2</sup> )	Matching Cylinder	Clamping Range (mm)
NT-206A5	13	2400	2650	27	3600	14.8	0.063	1246	Ø10-Ø168
NT-208A6	16	3500	4150	26	3000	24.1	0.175	1552	Ø10-Ø210
NT-210A8	22	4870	5700	27	2400	42.5	0.347	1075	Ø10-Ø254

Dimensions	A	B	C(H6)	D	D1	D2	E	E1	F	G <sub>max</sub>	G <sub>min</sub>	H	J
NT-206A5	168	90	140	104.78	82.563	116	5	18	45	6.5	-8.5	19	45
NT-208A6	210	100	170	133.35	106.375	150	5	23	52	7	-13	20	52
NT-210A8	254	110	220	171.45	139.719	190	5	18	75	8	-17	25	75

Dimensions	K <sub>max</sub>	L	L1	M	N	P	Q <sub>max</sub>	Q <sub>min</sub>	R <sub>max</sub>	R <sub>min</sub>	S	T	U
NT-206A5	M55*2	6-M10	15	37	73	20	25.75	13.75	39	27	31	12	3-M6
NT-208A6	M60*2	6-M12	18	38	95	25	28.25	16.25	49.25	33.25	35	14	3-M6
NT-210A8	M85*2	6-M16	22	43	110	30	35.25	17.25	64.25	45.25	40	16	3-M8

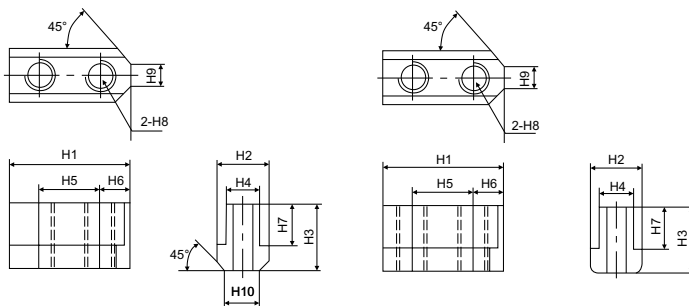
3-кулачковый патрон гидравлический усиленный без сквозного отверстия (без адаптера)



Dimensions	A	B	C(H6)	F	G	H	K	L	M	N <sub>max</sub>	N <sub>min</sub>
V-206H	165	80	140	5	116	104.5	6-M10	14	20	37.8	33.55
V-208H	215	92	170	5	150	133.4	6-M12	18	25	46.3	41.90
V-210H	254	115	220	5	190	171.4	6-M16	20	30	51.4	47.00

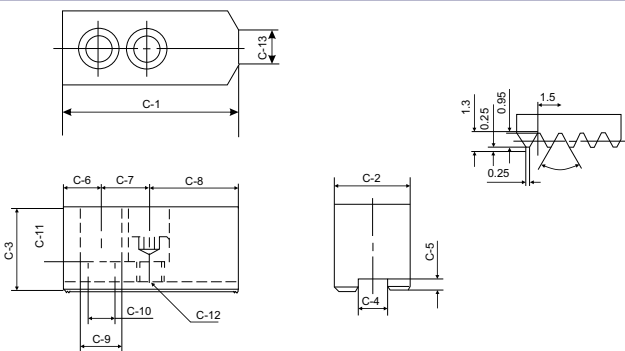
Dimensions	O <sub>max</sub>	O <sub>min</sub>	P <sub>max</sub>	P <sub>min</sub>	Q	R	S	T	U	V	W	X
V-206H	18	7.5	101.5	81.5	31	12.0	36	4	M16x2.0P	34	39	73
V-208H	22.5	9	127	106.0	35	14.0	36	5	M20x2.5P	38	42	95
V-210H	37.5	10.5	158	133.0	40	16.0	36	5	M20x2.5P	45	46	110

Dimensions	Plunger Stroke	Jaw Stroke	Max. Speed	Max. Pull Force	Max. Gripping Force	Matching Cylinder	Gripping Range		Max. Pressure	Weight (kg)
							Max	Min		
V-206H	20	28	5000	1730(17)	5200(51)	J-Y1020	165	19	27(2.6)	13.0
V-208H	25	40	4600	2440(22)	7440(73)	J-Y1225	210	23	25(2.5)	25.0
V-210H	30	50	4000	2850(28)	10810(106)	J-Y1530	254	24	29(2.8)	37.0



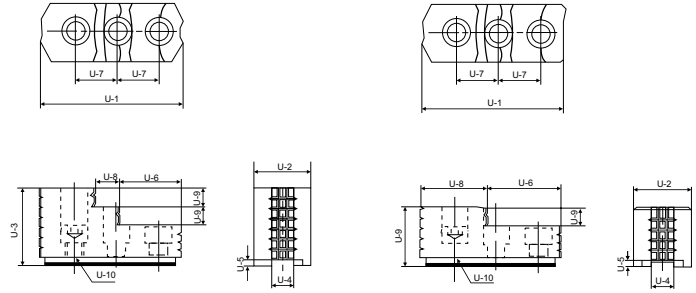
Dimensions	H1	H2	H3	H4	H5	H6	H7	H8	H9	H10
VT-04	28.0	15.0	18.0	10	14	7	12.5	M8	5	10
NT-05	26.0	15.0	15.0	10	14	6	9.5	M8	5	10
VT-05	26.0	15.0	16.5	10	14	6	11.0	M8	5	10
NT-06	36.5	17.5	18.5	12	20	8.2	11.0	M10	5	11
VT-06	36.5	17.5	22.5	12	20	7.5	15.0	M10	5	11
NT-08	46.5	20.0	20.5	14	25	10.5	12.0	M12	12	14
VT-08	50.0	21.0	26.0	14	25	12.5	16.5	M12	8	14
NT-10	51.0	22.5	21.5	16	30	11	13.0	M12	11	14
VT-10	55.0	22.5	25.5	16	30	11	16.0	M12	8	14
NT-12	55.5	29.5	27.8	21	30	11.5	16.3	M16	13	-
VT-12	55.5	26.5	33.5	18	30	12.0	20.0	M14	12	-
NT-15	80.0	33.5	38.0	24	43	17	21.5	M20	11	-
VT-15	80.0	33.5	38.0	22	43	17	21.5	M20	11	-
VT-24	100.0	37.5	45.0	25	60	20	26.0	M20	16	-

## Комплект сырых кулачков HC



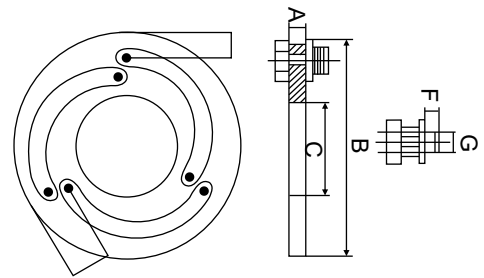
Dimensions	C-1	C-2	C-3	C-4	C-5	C-6	C-7	C-8	C-9	C-10	C-11	C-12	C-13	P	Weigt (kg)
HC04	49.5	23	23	10	5	9	14	26.5	13.5	9	14	M8	3	1.5x60°	0.45
HC05	54	25	30	10	5	9	14	31	13.5	9	21	M8	5	1.5x60°	0.70
HC06	73	31	36	12	5	15	20	31	17	11	23	M10	14	1.5x60°	1.50
HC08	95	35	37	14	5	25	25	46	19	13	22	M12	16	1.5x60°	2.40
HC10	110	40	42	16	5	30	30	50	19	13	27	M12	18	1.5x60°	3.70
HC12	130	50	50	21	5	39	30	61	25	17	30	M14	23	1.5x60°	6.20
HC12-1	130	50	50	18	5	39	30	61	23	15	30	M16	23	1.5x60°	6.25
HC15	165	62	62	22	8	37	43	85	32	21	38	M20	-	1.5x60°	12.80
HC15-1	165	62	62	25.5	5	37	43	85	32	21	38	M20	-	1.5x60°	12.80
HC24-1	180	65	70	25	9	40	60	80	32	21	45	M20	-	3.0x60°	16.00



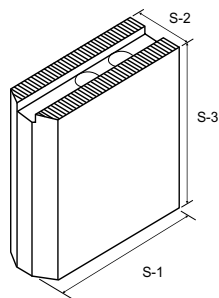


Dimensions	U-1	U-2	U-3	U-4	U-5	U-6	U-7	U-8	U-9	U-10	P	Weigt (kg)
HJ05	53	23	28	10.0	4	29	14	24	10	M8x1.25P	1.5x60°	0.4
HJ06	67	31	36	12.0	5	39	20	28	12	M10x1.5P	1.5x60°	0.95
HJ08	87	35	51	14.0	5	30	25	18	12	M12x1.75P	1.5x60°	1.9
HJ10	101	40	54	16.0	5	46	30	18	13	M12x1.75P	1.5x60°	2.8
HJ12	108	50	67	21.0	4	49	30	20	16	M16x2P	1.5x60°	3.5
HJ12-1	108	50	67	18.0	5	49	30	20	16	M16x2P	1.5x60°	3.7
HJ15	143	62	86	22.0	8	55	43	38	20	M20x2.5P	1.5x60°	9.6
HJ15-1	143	62	86	25.5	5	55	43	38	20	M20x2.5P	1.5x60°	9.5

Приспособление для расточки кулачков WC



Dimensions	A	B	C	D	E	F	G	Weigt (kg)
WC-04	12	114	34	12	28	9	13	0.9
WC-05	12	140	60	12	28	9	13	1.2
WC-06	12	168	60	12	32	9	16.5	1.5
WC-08	12	218	115	15	36	9	18.5	2.4
WC-10	12	258	150	17	40	9	18.5	3.1
WC-12	15	316	188	21	50	9	22.5	5.4
WC-15	20	380	230	23	52	16	31	10.1


**HC05**

Dimensions	S-1	S-2	S-3	P
HC05-36	62	23	36	1.5x60°
HC05-48	62	23	48	1.5x60°
HC05-70	62	23	70	1.5x60°
HC05-100	62	23	100	1.5x60°

**HC06**

Dimensions	S-1	S-2	S-3	P
HC06-36	73	31	36	1.5x60°
HC06-50	73	31	50	1.5x60°
HC06-60	73	31	60	1.5x60°
HC06-70	73	31	70	1.5x60°
HC06-80	73	31	80	1.5x60°
HC06-90	73	31	90	1.5x60°
HC06-100	73	31	100	1.5x60°
HC06-130	73	31	130	1.5x60°
HC06-150	73	31	150	1.5x60°

**HC08**

Dimensions	S-1	S-2	S-3	P
HC08-50	95	35	50	1.5x60°
HC08-60	95	35	60	1.5x60°
HC08-70	95	35	70	1.5x60°
HC08-80	95	35	80	1.5x60°
HC08-90	95	35	90	1.5x60°
HC08-100	95	35	100	1.5x60°
HC08-120	95	35	120	1.5x60°
HC08-150	95	35	150	1.5x60°
HC08-180	95	35	180	1.5x60°
HC08-210	95	35	210	1.5x60°

**HC10**

Dimensions	S-1	S-2	S-3	P
HC10-50	110	40	50	1.5x60°
HC10-60	110	40	60	1.5x60°
HC10-70	110	40	70	1.5x60°
HC10-80	110	40	80	1.5x60°
HC10-90	110	40	90	1.5x60°
HC10-100	110	40	100	1.5x60°
HC10-120	110	40	120	1.5x60°
HC10-150	110	40	150	1.5x60°
HC10-180	110	40	180	1.5x60°
HC10-210	110	40	210	1.5x60°

**HC12**

Dimensions	S-1	S-2	S-3	P
HC12-60	129	48	60	1.5x60°
HC12-80	129	48	80	1.5x60°
HC12-100	129	48	100	1.5x60°
HC12-120	129	48	120	1.5x60°
HC12-150	129	48	150	1.5x60°
HC12-180	129	48	180	1.5x60°
HC12-200	129	48	200	1.5x60°

**Официальный дистрибьютор в России ООО "Аврора"**  
**[avroratools21@gmail.com](mailto:avroratools21@gmail.com)**  
**[avroora-tools.ru](http://avroora-tools.ru)**